



# Hydraulic Gear Pump

## Model GP-CBN

### 22 and 28 gpm Models



Model GP-CBN is a HI/LO hydraulic gear pump offers maximum pressures of 900 psi for the low pressure pump and 3000 psi for the high pressure pump. The change from LO to HI pressure is automatic with the LO pressure preset from 400 psi to 900 psi (preset at approx. 850 psi). The HI/LO pump is all cast iron. Applications for HI/LO pumps include log splitters, presses, etc. where rapid movement of the cylinder at low pressure is required prior to automatically switching to the high pressure mode to meet load requirements.

### Technical Specifications

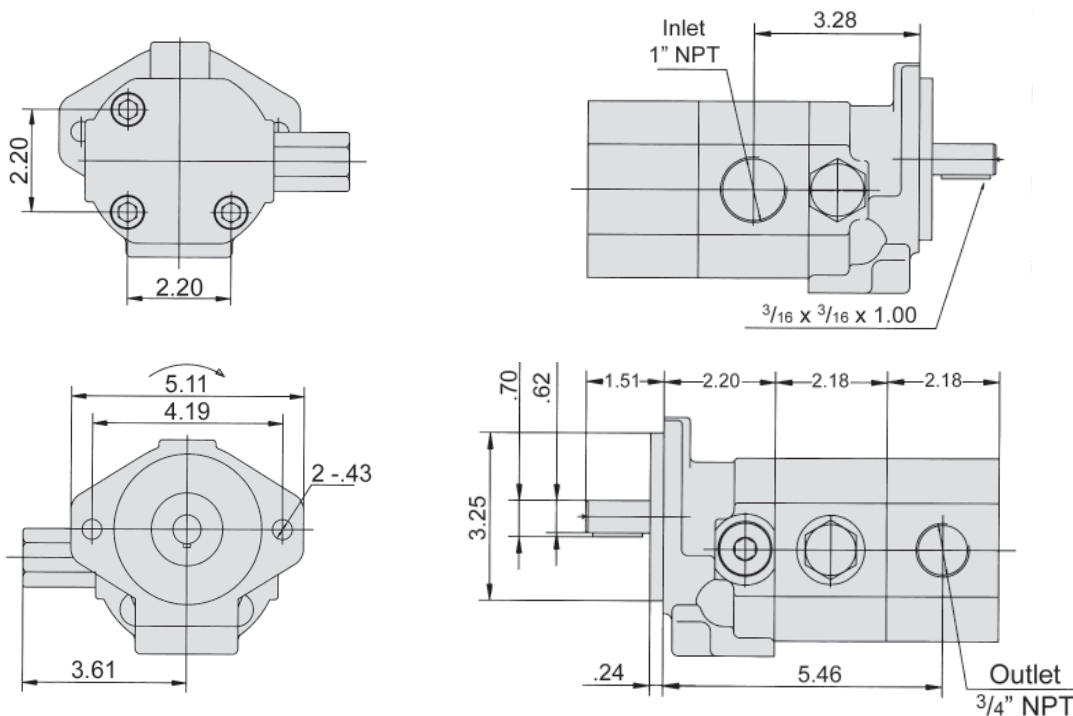
Model	Flow at 3600 rpm (gpm)	Displacement in <sup>3</sup> /rev (cm <sup>3</sup> /rev)		Pressure (psi)		Speed (rpm)	Weight (lbs)
		LO	HI	LO	HI		
GP-CBN-220-P-C	22	0.465 (7.63)	0.93 (15.26)	400/900	3000	3600	18.6
GP-CBN-280-P-C	28	0.465 (7.63)	1.395 (22.88)	400/900	3000	3600	19.7

Flow Rate (gpm) = Displacement (in<sup>3</sup>/rev) X Speed (rpm) / 231 Volumetric efficiency % ≥93

### Recommended working conditions:

FILTRATION: 25 micron or better  
 OIL VISCOSITY: 7 - 700 cSt  
 INLET PRESSURE: 12 - 32 psi abs.  
 OIL TEMP: -25° - 80°C (-12° - 175°F)  
 AMBIENT TEMP: -22° - 55°C (-8° - 130°F)

### Installation Data



### Ordering Example:

Category	Series	Displacement	Drive Shaft	Rotation
<b>GP</b>	<b>CBN</b>	<b>280</b>	<b>P</b>	<b>C</b>

Category	Series	Nominal Flow gpm at 3600	Drive Shaft**	Rotation
GP = Gear Pump	CBN = HI/LO Series	220 = 22 gpm 280 = 28 gpm	P = 5/8" dia. Straight	C = Clockwise (viewed from shaft end)

\*\* Additional shaft options available. Please consult factory.

Seal kits for CBN gear pumps are available. See page 126 for details.