



FLUID COMPONENTS, INC.

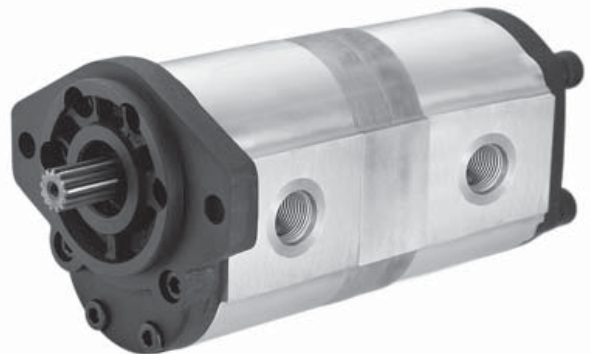
Hydraulic Gear Pumps

Double & Triple Pumps

Dynamic gear pump models GP-F10, GP-F20 and GP-F25 are available with features that allow pumps to be stacked to produce double and triple pumps from the base model. Technical data, including displacement sizes, working pressure, rated speed, etc. is as per the first pump position pump model. For example model GP-F20D-12/08-S9-C is a double pump with displacements of 12 and 8 cm³/rev (.73 and .48 in³/rev) rated at 2000 rpm and 2900 psi with a 9-tooth spline drive shaft and clockwise rotation.

Recommended working conditions:

FILTRATION: 25 micron or better
 OIL VISCOSITY: 7 - 700 cSt
 INLET PRESSURE: 12 - 32 psi absolute
 OIL TEMPERATURE: -25° - 80° C (-12° - 175° F)
 AMBIENT -22° - 55° C (-8° - 130° F)



Installation Data

Contact Dynamic for installation information on specific models. Custom stacked pumps can also be produced by special order. Consult factory for details.

Ordering Example: **GP** - **F20D** - **12** / **08** / - **P** - **C** -

Category	Series	Stack	Pump Sizes	Drive Shaft	Rotation	Inlet
Gear Pump	F10 = "AA" Mount F20 = "A" Mount F25* = "B" Mount	D = Double T* = Triple	Displacement options below	Shaft options below	C = Clockwise A = Counter-Clockwise (viewed from shaft end)	omit = dual inlet SI = single inlet

F10 - Disp. Options

Model	Displacement in ³ (cm ³) / rev
GP-F10-13	0.07 (1.3)
GP-F10-20	0.12 (2.0)
GP-F10-27	0.16 (2.7)
GP-F10-34	0.20 (3.4)
GP-F10-41	0.25 (4.1)
GP-F10-51	0.31 (5.1)
GP-F10-61	0.37 (6.1)
GP-F10-80	0.48 (8.0)
F10 Shaft Options	
P = 1/2" dia. Straight	

F20 - Disp. Options

Model	Displacement in ³ (cm ³) / rev
GP-F20-04	0.24 (4)
GP-F20-06	0.36 (6)
GP-F20-08	0.48 (8)
GP-F20-10	0.61 (10)
GP-F20-12	0.73 (12)
GP-F20-14	0.85 (14)
GP-F20-16	0.97 (16)
GP-F20-20	1.22 (20)
GP-F20-25	1.52 (25)
GP-F20-30	1.83 (30)
GP-F20-32	1.95 (32)
F20 Shaft Options	
P = 5/8" dia. Straight	
P1* = 3/4" dia. Straight	
S9* = 9-tooth Spline	
S11* = 11-tooth Spline	

F25 - Disp. Options

Model	Displacement in ³ (cm ³) / rev
GP-F25-22	1.34 (22)
GP-F25-26	1.57 (26)
GP-F25-34	2.07 (34)
GP-F25-39	2.38 (39)
GP-F25-43	2.62 (43)
GP-F25-51	3.11 (51)
GP-F25-60	3.84 (60)
GP-F25-70	4.27 (70)
GP-F25-78	4.76 (78)
GP-F25-89	5.43 (89)
F25 Shaft Options	
P* = 7/8" dia. Straight	
S13* = 13-tooth Spline	

Please Note:

Only F10 and F20 double pumps with dual inlets and the standard "P" shaft can be built in-house. All other double and triple pumps are special order and come direct from the factory.

* Special Order