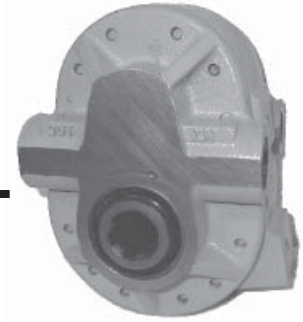


## Side Port PTO Gear Pump Model GP-PTO



Model GP-PTO is a Power Take Off gear pump constructed with cast iron end plates and an aluminum center section. It offers 4 displacement sizes from 3.41 to 9.76 in<sup>3</sup>/rev (56-160 cm<sup>3</sup>/rev). Standard drive is 1 3/8" diameter 6-tooth female spline.

### Technical Specifications

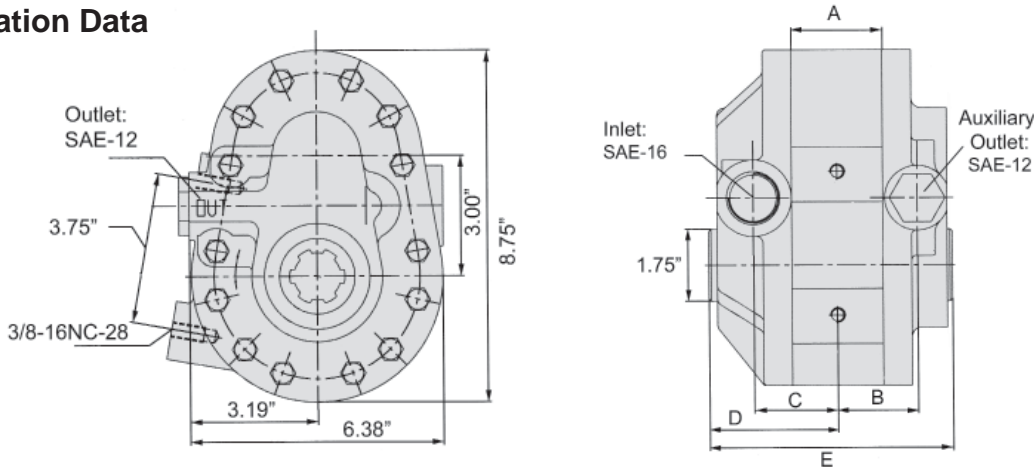
Model	Displacement (in <sup>3</sup> (cm <sup>3</sup> ) / rev)	Pressure (psi)	Speed		Weight (lbs)
			Rated	Max	
GP-PTO-A-3-6-S	3.41 (56)	2500	540	595	33
GP-PTO-A-3-21-S	3.41 (56)	2500	1000	1100	33
GP-PTO-A-5-6-S	5.50 (90)	2500	540	595	36
GP-PTO-A-5-21-S	5.50 (90)	2500	1000	1100	36
GP-PTO-A-7-6-S	7.62 (125)	2500	540	595	38
GP-PTO-A-9-6-S	9.76 (160)	2500	540	595	40

#### Recommended working conditions:

FILTRATION: 25 micron or better  
 OIL VISCOSITY: 7 - 700 cSt  
 INLET PRESSURE: 12 - 32 psi abs.  
 OIL TEMP: -25° - 80° C (-12° - 175° F)  
 AMBIENT: -22° - 55° C (-8° - 130° F)

Flow Rate (gpm) = Displacement (in<sup>3</sup>/rev) X Speed (rpm) / 231  
 Volumetric efficiency % ≥93

### Installation Data



Model	A	B	C	D	E
GP-PTO-A-3-*	1.26"	1.54"	1.63"	2.78"	5.23"
GP-PTO-A-5-*	1.62"	1.72"	1.81"	2.97"	5.60"
GP-PTO-A-7-*	2.00"	1.91"	2.00"	3.16"	5.97"
GP-PTO-A-9-*	2.37"	2.09"	2.19"	3.35"	6.35"

### Ordering Example:

Category      Series      Center      Displacement      Drive      Ports  
**GP** - **PTO** - **A** - **5** - **6** - **S**

Category	Series	Center Section	Displacement	Drive	Ports
Gear Pump	PTO = Power Take Off Gear Pump	A = Aluminum	3/5/7/9	6 = 6-tooth Spline 21* = 21-tooth Spline	S = Side Ports

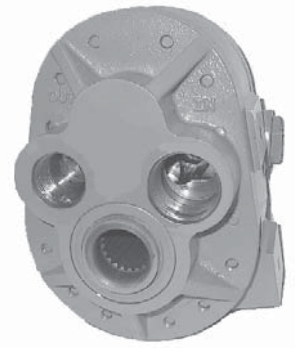
\*21-tooth Spline option only available on size 3 & 5 pumps by special order - minimum quantities may be required.

Seal kits for PTO pumps are available. See page 126 for details.

# DYNAMIC

FLUID COMPONENTS, INC.

## Rear Port PTO Gear Pump Model GP-PTO



Model GP-PTO is a rear-ported, Power Take Off gear pump constructed with cast iron end plates and an aluminum center section. This pump offers a 9.76 in<sup>3</sup>/rev (160 cm<sup>3</sup>/rev) displacement and higher flows at reduced engine rpm as compared to other PTO pumps. Standard drive is 1 3/8" diameter 21-tooth female spline.

### Recommended working conditions:

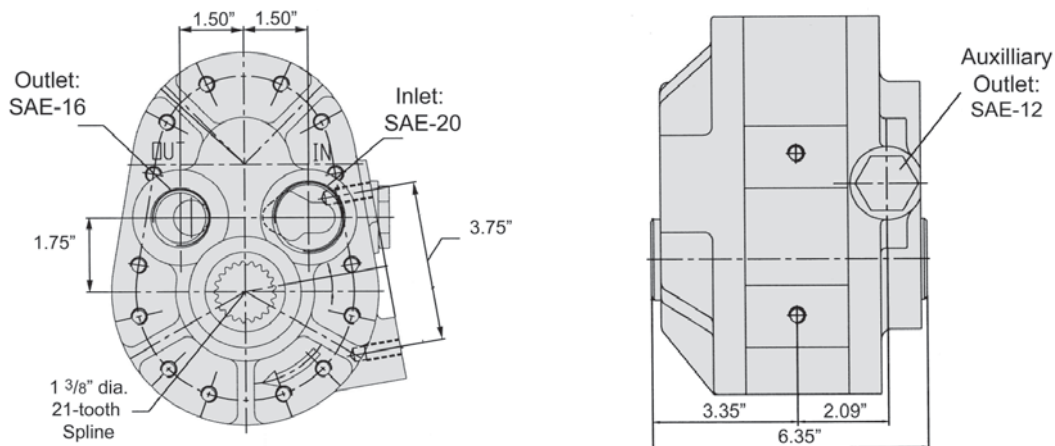
FILTRATION: 25 micron or better  
 OIL VISCOSITY: 7 - 700 cSt  
 INLET PRESSURE: 12 - 32 psi abs.  
 OIL TEMPERATURE: -25° - 80°C (-12° - 175°F)  
 AMBIENT TEMPERATURE: -22° - 55°C (-8° - 130°F)

### Technical Specifications

Model	Displacement		Pressure	Speed		Weight
	in <sup>3</sup> /rev	cm <sup>3</sup> /rev	psi	Rated	Max	Lbs
GP-PTO-A-9-21-R	9.76	160	2500	1000	1100	40

Flow Rate (gpm) = Displacement (in<sup>3</sup>/rev) X Speed (rpm) / 231  
 Volumetric efficiency % ≥93

### Installation Data



Ordering Example:

Category      Series      Center      Displacement      Drive      Ports  
**GP** - **PTO** - **A** - **9** - **21** - **R**

Category	Series	Center Section	Displacement	Drive	Ports
Gear Pump	PTO = Power Take Off Gear Pump	A = Aluminum	9	21 = 21-tooth Spline	R = Rear Ports

Seal kits for PTO pumps are available. See page 126 for details.