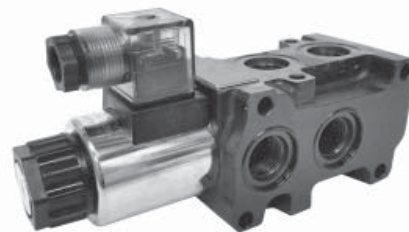




Model DSV Selector Valve

The DSV 12-volt DC selector valve is operated by a continuously rated wet pin solenoid. This is capable of switching from one circuit to another at a variety of flows and pressures. The DSV may be connected to the service ports of a directional control valve and used to direct service line flow to and from either of two separate devices. If more than two circuits are to be controlled, additional units can be stacked together (max of 3), minimizing the need for pipes and fittings. Also the DSV series valves can be connected to a pump and used to direct the flow to either one of two different circuits.

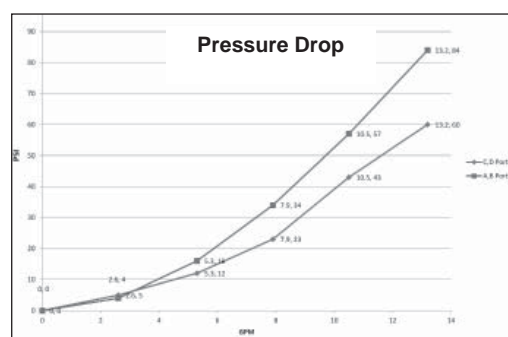
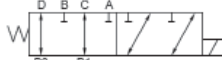


Technical Specifications

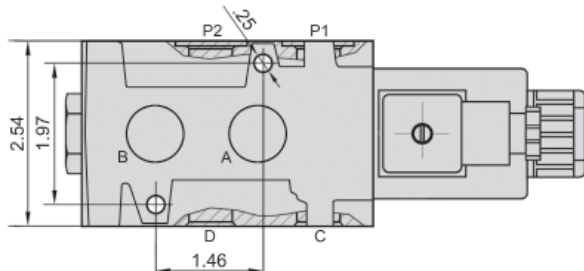
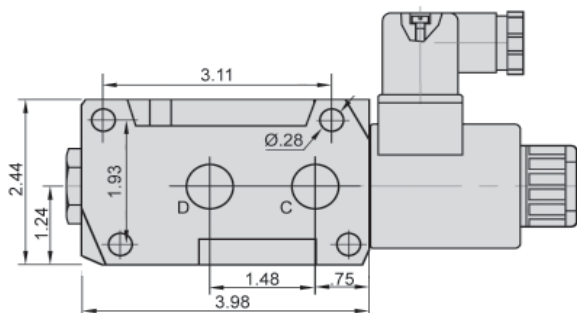
| Hydraulic | | |
|------------------------|-----------------|-----------------|
| Port Size | 3/4-16 - SAE-08 | 7/8-14 - SAE-10 |
| Max Flow Rate | 13.2 gpm | 24.0 gpm |
| Operating Pressure | 3600 psi | 3600 psi |
| Oil Temp Range | -4°F - 158°F | -4°F - 158°F |
| Viscosity Range | 70-1790 SSu | 70-1790 SSu |
| Filtration Requirement | NAS 1638 8 | NAS 1638 8 |
| Weight | 6.5 lbs | 11.5 lbs |

| Electrical | |
|------------------|--------------------------------------|
| Supply Voltage | 12/24 VDC |
| Amperage Rating | 2.50A for DC 12V 1.21A for DC 24V |
| Max Ambient Temp | 125° F |
| Max Coil Temp | 356° F |
| Duty Cycle | Continuous |

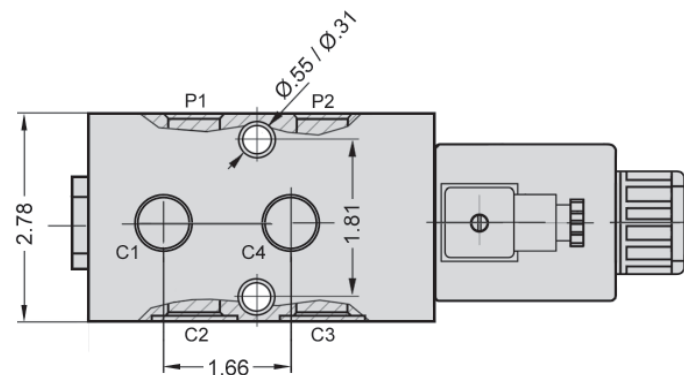
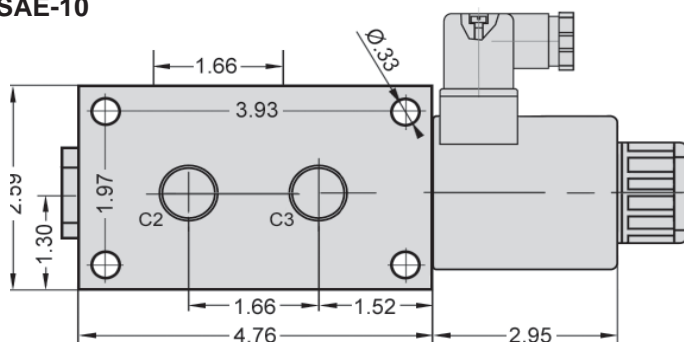
Spool Function



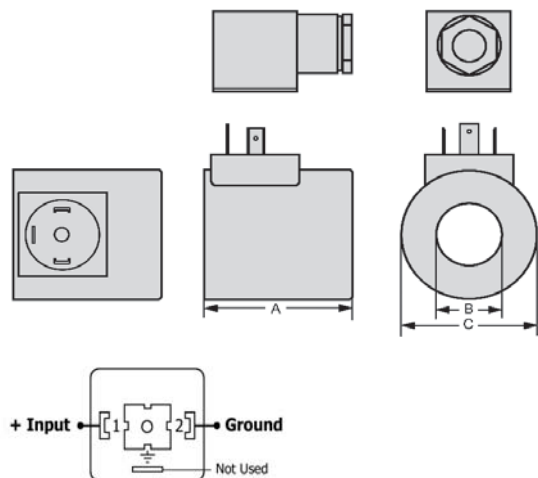
SAE-08



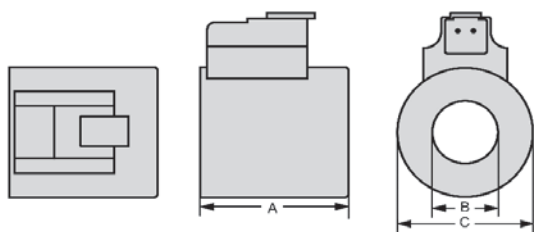
SAE-10



DIN Connector

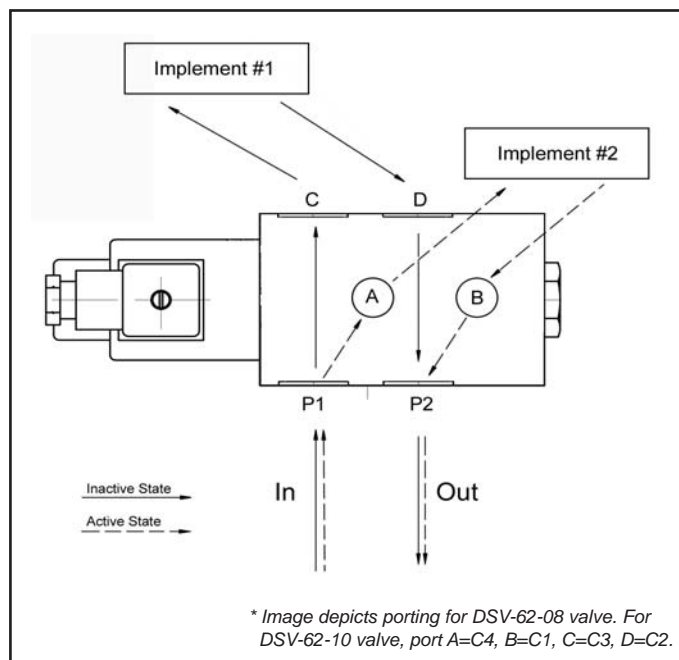


Deutsch Connector



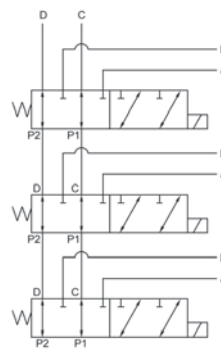
Coil Dimensions

| Size | A | B | C |
|--------|-------|-------|-------|
| SAE-08 | 1.99" | .91" | 1.77" |
| SAE-10 | 2.96" | 1.22" | 2.48" |



Stacking Valves

DSV Selector Valves can be stacked together to provide multiple circuit capacity. Up to 3 units can be stacked as the diagram below shows.



Ordering Example:

| Model | Style | Port Size | Supply Voltage | Connector |
|------------|-------------|-------------|----------------|--------------|
| DSV | - 62 | - 08 | - 12 | - DIN |

| Model | Style | Port Size** | Supply Voltage | Connector** |
|-----------------------------|-----------------------|----------------------------|--|----------------------------|
| DSV= Dynamic Selector Valve | 62 = 6-way, 2-Station | 08 = SAE-08 10 = SAE-10 | 12 = 12VDC 24* = 24VDC 110* = 110VAC | DIN = DIN DEU = Deutsch |

* Special Order

** Additional port sizes and connectors may be available by special order.